

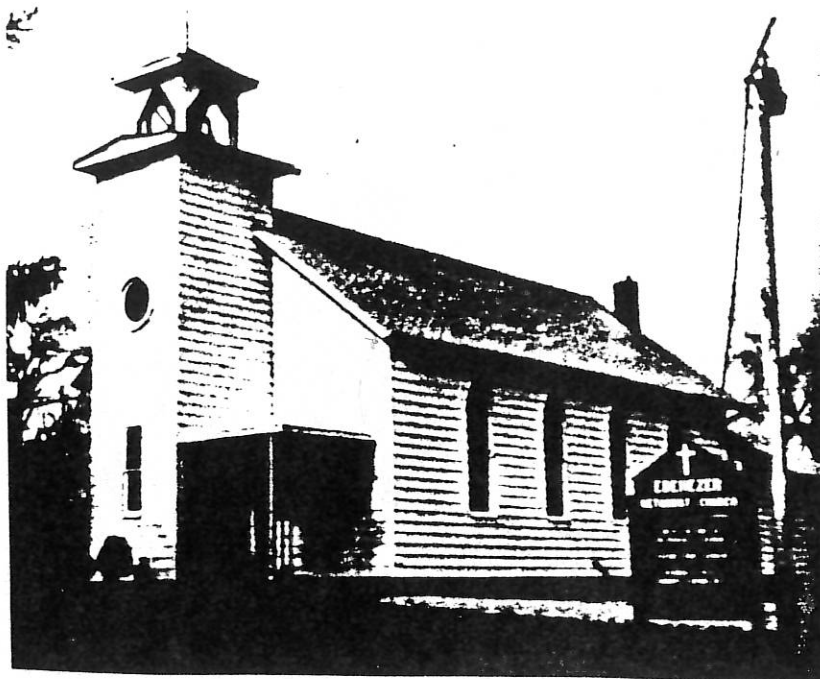
Bible Christian Church constructed on "Century Hill" in 1840

Rev. William Foster, an itinerant Lutheran minister also held frequent house to house services in Roseville from 1812 to 1818. About 1820 a log meeting house was erected on the hill in the cemetery near where the famous beech trees stood. Here the four denominations, The Lutherans, the Presbyterians, the Methodists, and the Baptists all held services whenever a minister would come.

In 1820 a log meeting house was built near the cemetery on the hill with money contributed by members of all denominations. Howard wrote as follows: "The logs were afterward weatherboarded, and the inside lathed and plastered, but the slab seats were still in the house when I left in 1849."

The "Old Ironsides" Baptists so called held meeting there about once a month. The Reverends Harper, Moody and McCaslin were the preachers who held forth, their subjects generally being 'Foreordination' and 'Predestination.' I have seen some of the members after 'meetin' was out and communion over go up to the table and drink the balance of the wine that might be left.

Howard recalled that Roseville boys mocked Brother McCaslin's sing-song style of ending each sentence with a long 'ah'. The boys quoted him as follows: "As I was riding through the streets of wicked Roseville -- 'ah' --I heard the boys taking the name of the Lord in vain -- 'ah' --I told them to flee the wrath to come -- 'ah' --And what do you think they said to me -- 'ah'? Go to hell, Brother McCaslin -- 'ah'! And I now tell you all to flee the wrath to come -- 'ah'."



Roseville Ebenezer United Methodist Church

After the beginning of Methodism in England in 1729, with John Wesley as the founder, the faith spread rapidly to Ireland and then to America. In 1769, Wesley sent two lay preachers to America. One, Frances Asbury became the leader of American Methodism.

The early days are important as the history of the Ebenezer Church reveals many of the happenings in Methodism.

In 1788, four years after the Baltimore Christmas Conference, a member of the conference was sent by Bishop Asbury across the Ohio River to Marietta. Here the first Methodist sermon was preached in southwestern Ohio.

Here also was the beginning of the circuit riders, preachers traveling the frontiers on horseback, holding meetings in log cabins, school houses, barns, and taverns. This pioneer movement resulted in the forming of many churches including the Ebenezer Church.

In 1830, the Ebenezer Society was formed in the home of W.B. Underwood near the presnet church on the farm where the Foglesongs now live.

As the society grew, it was soon too large for the small home and a church was built. Labor and timber was donated and when finished, was known as the "Underwood Church". Two preachers, a senior and junior preacher, were on the circuit.

Through the years, various churches were added to the circuit and the name of Roseville was given in 1849. In the same year, the second church was built on the present location.

It was dedicated by Ebenezer Chase, the preacher at that time, and was given the name Ebenezer in his honor. Ebenezer means "The Stone of Help." The present church was built in 1892.

Many changes, including improvements to the building, have been recorded. Ebenezer is known as "the friendly church on the hill."

In March 1979, the new church addition was dedicated, and is serving the congregation in a very special way, even today.

With the heritage bequeathed to Ebenezer Church by its early founders, the children of Ebenezer may well look forward to the next 100+ years by the dedication of its present members and its great wealth in the youth and years with anticipation and promise.

A small church in a rural setting, its people are dedicated to carrying out Christ's ministry.



St. Paul's Evangelical Lutheran Church

St. Paul's Lutheran Church can be traced back to 1812 when Rev. William Foster an itinerant Lutheran pastor began to hold worship services in the homes of settlers from 1818 to 1820.

Rev. Andrew Henkle, assisted by Rev. Lewis Shield continued the house services until 1820 when a log meeting house was built on the hill in the community cemetery. Four denominations joined together to build this meeting house and in 1820 Rev. Samuel Kemerer was called to serve four early Lutheran congregations of the area, Jerusalem, Stovertown, Fultonham, and New Milford (later Roseville).

In 1833 Rev. Kemerer led a growing congregation in New Milford to a formal and permanent congregation.

A permanent organization of St. Paul's of Roseville was effected in 1836 when the separate congregations united to call Rev. Amos Bartholomew, who served three years - until 1839. He preached every four weeks at each place, residing in Fultonham. He resigned in 1839 to become pastor of the English Evangelical Lutheran Church in Zanesville.

It was under the ministry of Rev. James Manning that the first Lutheran Church building was constructed. It was begun in 1842 but not completed until 1849.

Under the leadership of Rev. John Hunton, the second building was constructed. Its cornerstone was laid August 7, 1884.

In 1915 Rev. W.E. Buchholtz was called to pastor the two early congregations-- Jerusalem and St. Paul's. It was under his ministry that the present building was built. It all began in 1921 with the first building-fund drive. In 1931, enough money had been raised to begin construction.

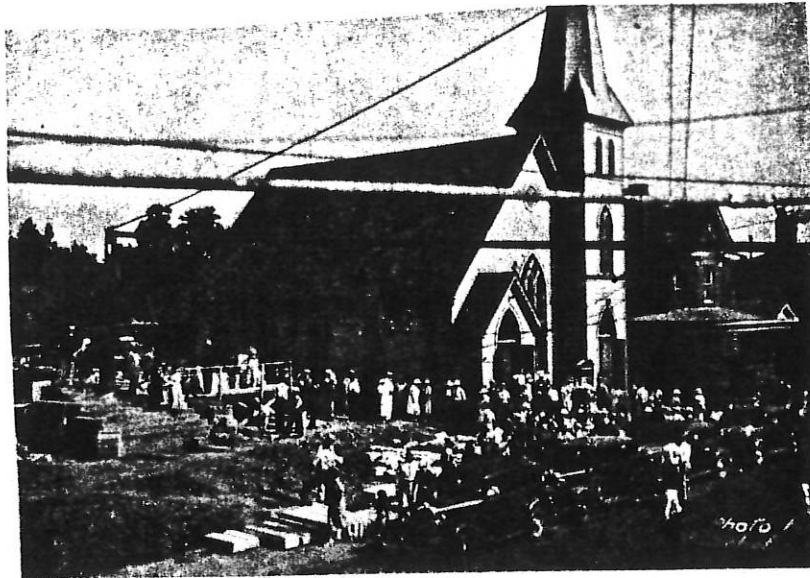
On February 21, 1931 the congregation voted to award the contract but the banking woes of the Depression closed the bank tying up the \$24,000 raised to build the church. The construction contract was voided.

In February 1937 the construction plan was again on the move and ground breaking was held July 8, 1937. August 27, 1937, the cornerstone was laid.

The present church was ready and dedicated on Easter Sunday, 1938. Rev. Buchholtz served the church until his death in 1951 -- a total of 36 years and had three sons enter the ministry from St. Paul's.

Ten sons of the congregation have entered the ministry in the past 150 years. They include: Rev. William and Charles Hunton; Paul, Thomas and Guy Wilson; Edward Capewell; John Zeigler; Luther, Paul and John Buchholtz. Presently Brent and Laura Cavendish are completing the final year of seminary to become our eleventh and twelfth members to the ministry.

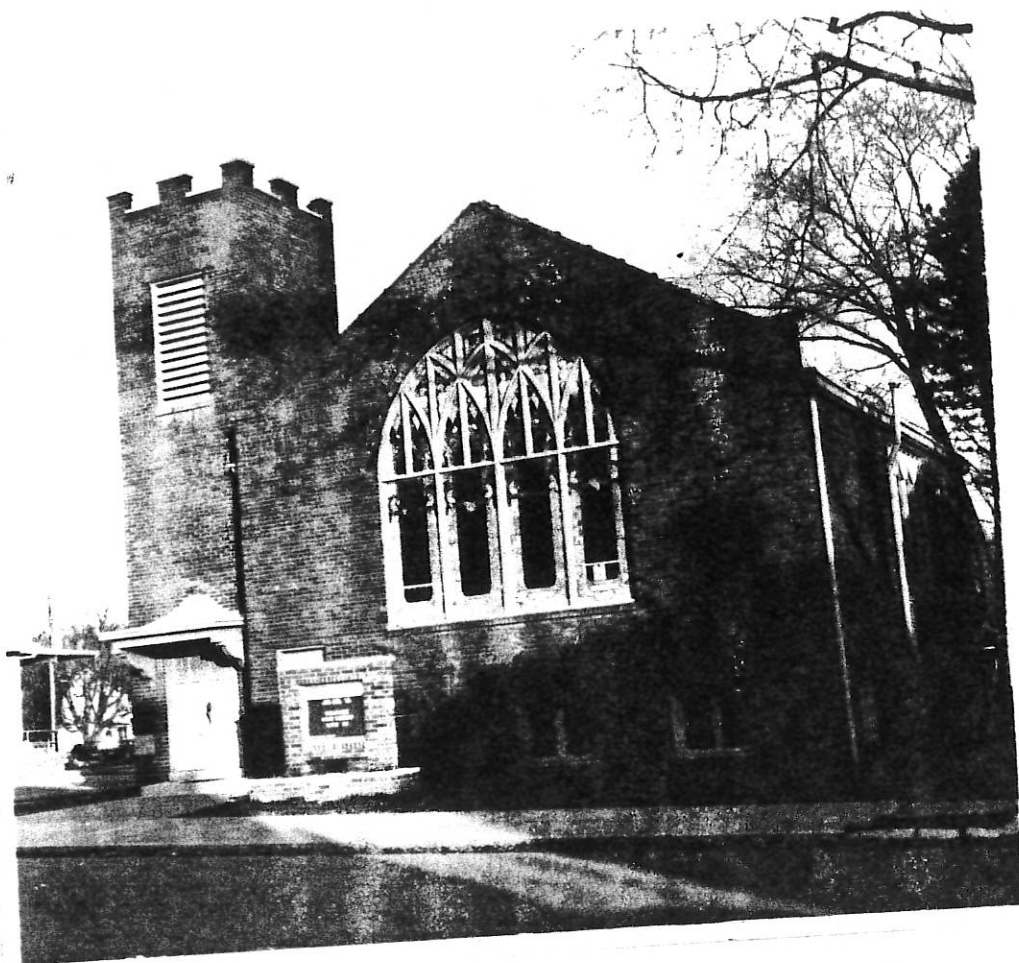
Russell Snyder was called to serve the congregation in October 1972 and



OUR OLD CHURCH HOME, ERECTED 1884



A VIEW OF CORNERSTONE LAYING SERVICE FOR NEW CHURCH



Roseville Presbyterian Church

Roseville Presbyterian Church is situated in a small southeastern Ohio village of about 2,000 people. The first minister recorded in the village was a Presbyterian, Rev. Moore. He held services at Chauncey Ford's cabin. According to history he wore knee breeches and silver buckled shoes.

The Roseville Church was organized on October 20, 1849 with 20 charter members and then incorporated on October 12, 1873. The first house of worship erected in 1851 was a frame structure 34 x 44 feet and cost between \$800 and \$900. It was dedicated free of debt.

The first pastor, Rev. Hugh McBride was installed the same day the church was organized and served until October 1854.

The second house was built of handmade bricks fired on the site. The contract had been awarded September 20, 1881, and the foundation laid and walls erected that fall. Legal problems with construction and bad weather prevented dedication until the fall of 1884.

In January of 1917, the Ladies Aid Society and Board of Trustees redecorated the Church interior. Electric lights and new windows were put in making the auditorium more beautiful. Expense was about \$850.

In April, the wind raised one corner of the roof and two Sundays or worship were missed. Services were held October and November in the Methodist Church while a new furnace was being installed.

A public worship was held January 20, 1918 in the morning. At 2:30 p.m. the building was discovered on fire. Water was scarce and the structure and contents were a total loss. The Lutheran, Methodist, and Bible Christian Churches offered use of their buildings. The Bible Christian Church was used until December 16, 1923 when the new building was completed.

The dedication sermon was given June 1, 1924 by Rev. Moses Bruse D.D. and he proceeded to raise the \$4,000 to completely pay the church debt.

This building is still being used to date with restrooms, gas furnace, storm windows, and air conditioning being added in the recent years. The area behind the pulpit has been redecorated with canopy and drape and wooden cross. Paraments for the seasons of the church year are now used.

Through the years, special people have touched our lives and the history of our church. Rev. Samuel Loomis, went to South Carolina to help the Freedmen. Hobart C. Chipen and two others went out to labor among the Indians and Freedmen. Rev. Henry Beeman served the church 20 years. Rev. Cecil Marly was a very dedicated and very loved minister, who later served as a Navy Chaplain.

The 100th anniversary on October 23, 1949 was an all day celebration with many people from out of town and village residents joining in. Rev. William Schuler was our pastor at the time.

We have shared many joys and many sorrows. Our greatest loss of the present was the death June 23, 1987 of our pastor for the past 21 years, John Buchholtz. He served our church family and the community with a fervent and dedicated spirit.

* * * * *

IN MEMORY OF

Marguerite Stokely Maddox

January 14, 1890 - August 9, 1990

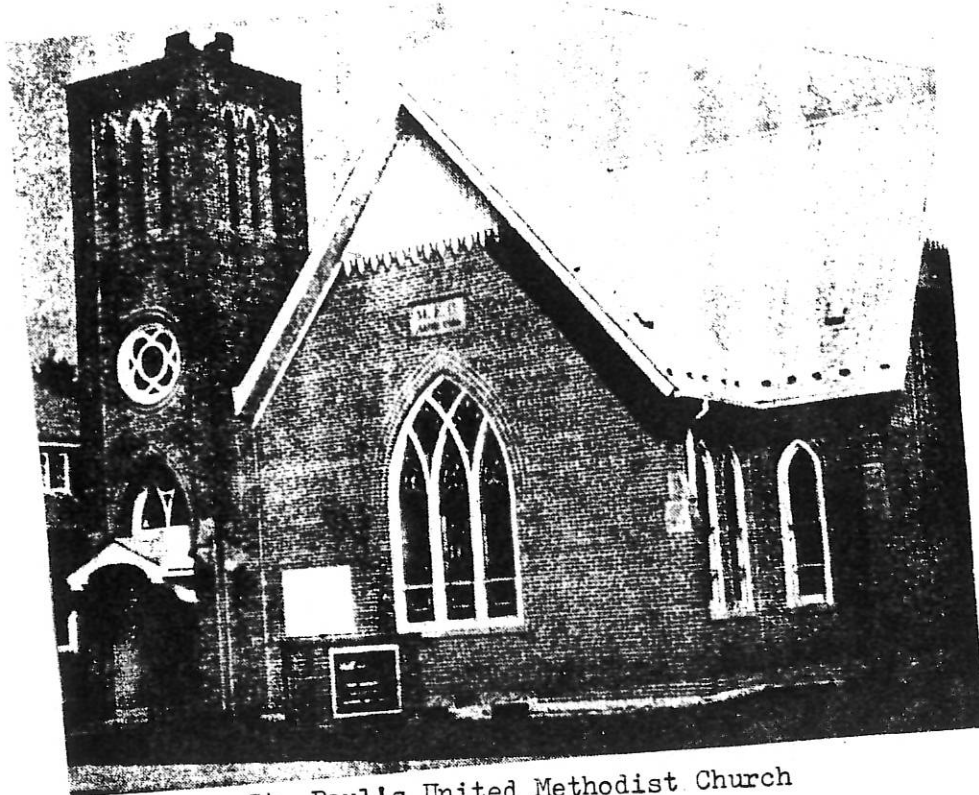
Her Invaluable Service to the church and community is recognized by all who knew and loved her.

A 1908 graduate of Roseville High School, she later returned to teach in the same school. Her talents and intelligence were much appreciated.

The Stokely family was part of the founding fathers of the church and Marguerite upheld the principles of the Christian life and shared her proud tradition with so many others.

Her spirit will always be a part of The Roseville Presbyterian Church.





St. Paul's United Methodist Church

In Roseville, the Methodists formed their own group. For a time, they worshipped in a new barn built by William Melick on land later owned by the late Karl and Ruth Brown.

In 1848 the first permanent Methodist church was built of logs on the lot where our church building now stands. The lot was purchased from Edward and Hannah Rose for \$90.

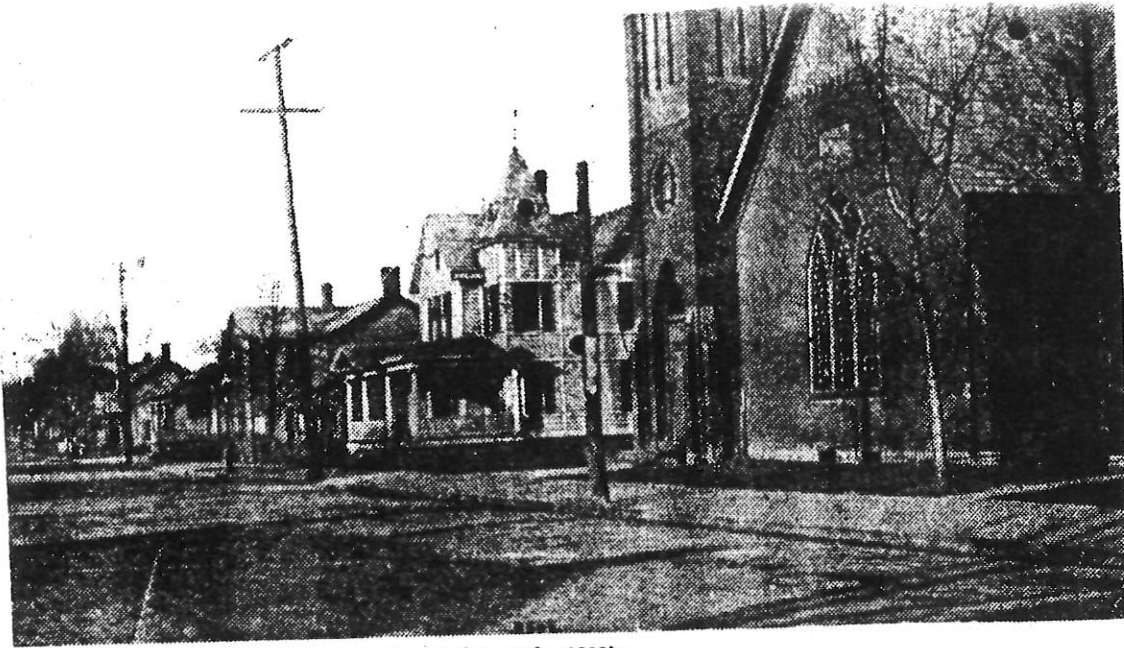
Later, a new frame church replaced the log structure. In it there was a center aisle -- a tier of seats on one side for women and a tier of seats on the other side for men.

An altar was placed around the front with the pulpit in the center and three benches on each side facing the minister. This was known as "the Amen Corner" because the "good old saints" who sat on them would encourage the ministers by shouting "Amen, bless the Lord" at every pause of the minister.

In 1952 an addition was added. And for some time, the brick home next to the church was used for extra Sunday School classrooms and meetings. It was known as Wesley Hall.

Throughout the years, the congregation has been involved in a variety of ministries and outreaches. In the early 1960's Rev. Harley Martin began ministering to the prisoners at the Ohio Prison Branch located just outside of Roseville.

Today, under the leadership of Rev. Gay E. Blau, the church is known for its outreach to the children of the community.



St. Paul's M.E. Church as it appeared in the early 1900's.

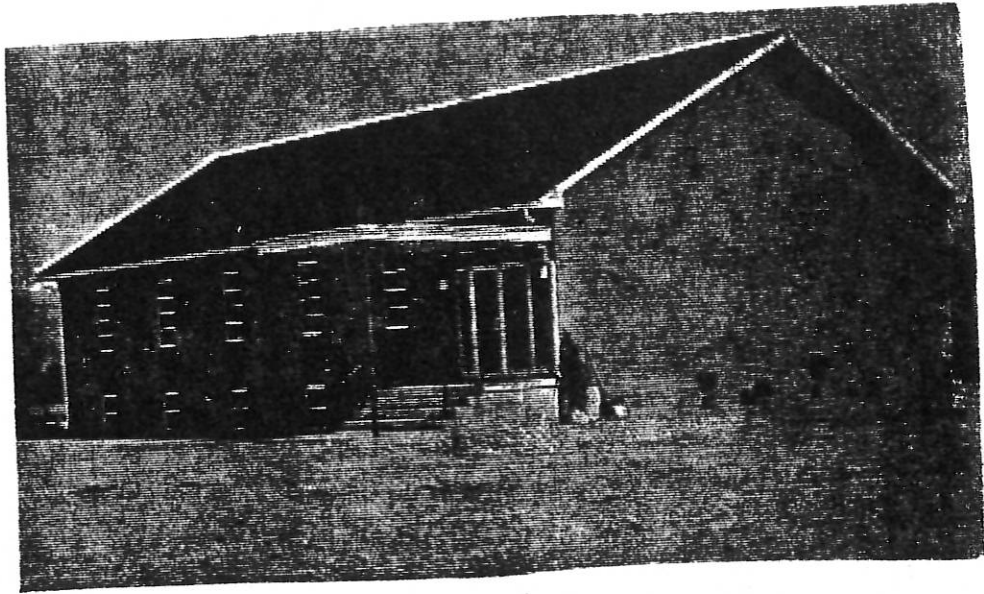


Franklin Avenue Church of Christ

Franklin Avenue Church of Christ has always stood on the same ground since it was founded on June 30, 1892. The charter members of our church include: John A. Golden, E.F. Laycock, C.J. Golden, May Mayers, Alice E. Golden, Eva Browning, and Zillah Walker.

Throughout the years many renovations have been done to the church building, the latest being the new vinyl siding and modern equipped kitchen as well as the addition at the rear to house more classrooms. There is now an office for the minister and elders for meetings. The first church board of trustees was organized May 4, 1960.

Past and present ministers are: Edwin Strate (15 years), Harry Stinson, George Wraight, Daly Myers, Larry Barrett, Sam Dunn, and currently Jody Holland. Today's attendance is around 60 to 70 weekly. Home classes are available for prospective members.



Roseville Church of the Nazarene

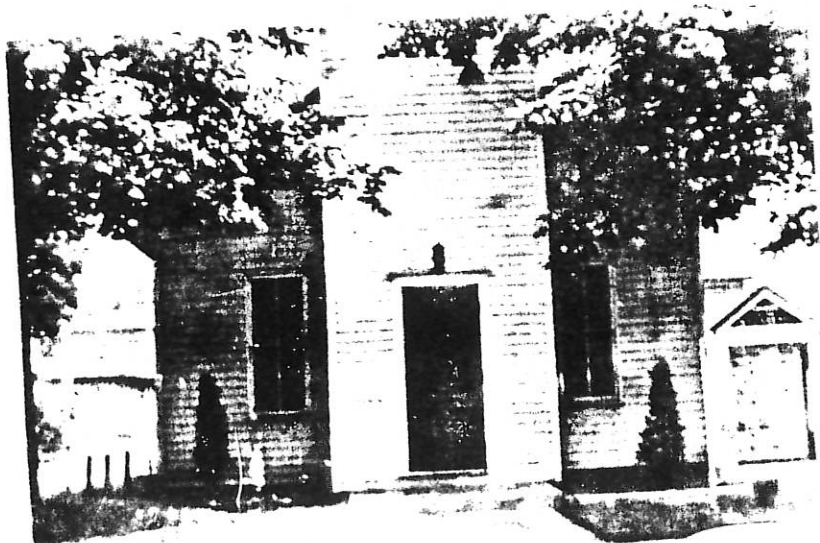
Back in the mid 1930's a small group of men and women started meeting in the homes for Bible Study and prayer. They built a small brick church in the corner of the Roseville Cemetery. On December 6, 1936, Charles Gibson organized the Roseville Church of the Nazarene, with 13 charter members. Rev. Albert Selbee was the first pastor. The first Sunday School was organized on December 13, 1936. The congregation enjoyed rapid growth and before long larger quarters were needed.

Under the leadership of Rev. Frank Noel the property on Perry Street was purchased sometime between 1938 and 1940. In 1946 Rev. Cecil Hayes became pastor and it was during his ministry that the parsonage was purchased and the addition for the Sunday School was built.

Rev. Carl Erwin was our minister between 1965 and 1967. It was under his leadership that the present ground was purchased for \$3,000.

Rev. Clyde Bartlett became our pastor in 1967. A formal ground-breaking ceremony was held. The present 70 x 38 foot brick structure was built in 1970 and cost \$54,000. The first church services in our new building were held on January 14, 1971.

Our present pastor, Rev. Tony Watson joined our church in 1988.



Our old church building on Perry Street.